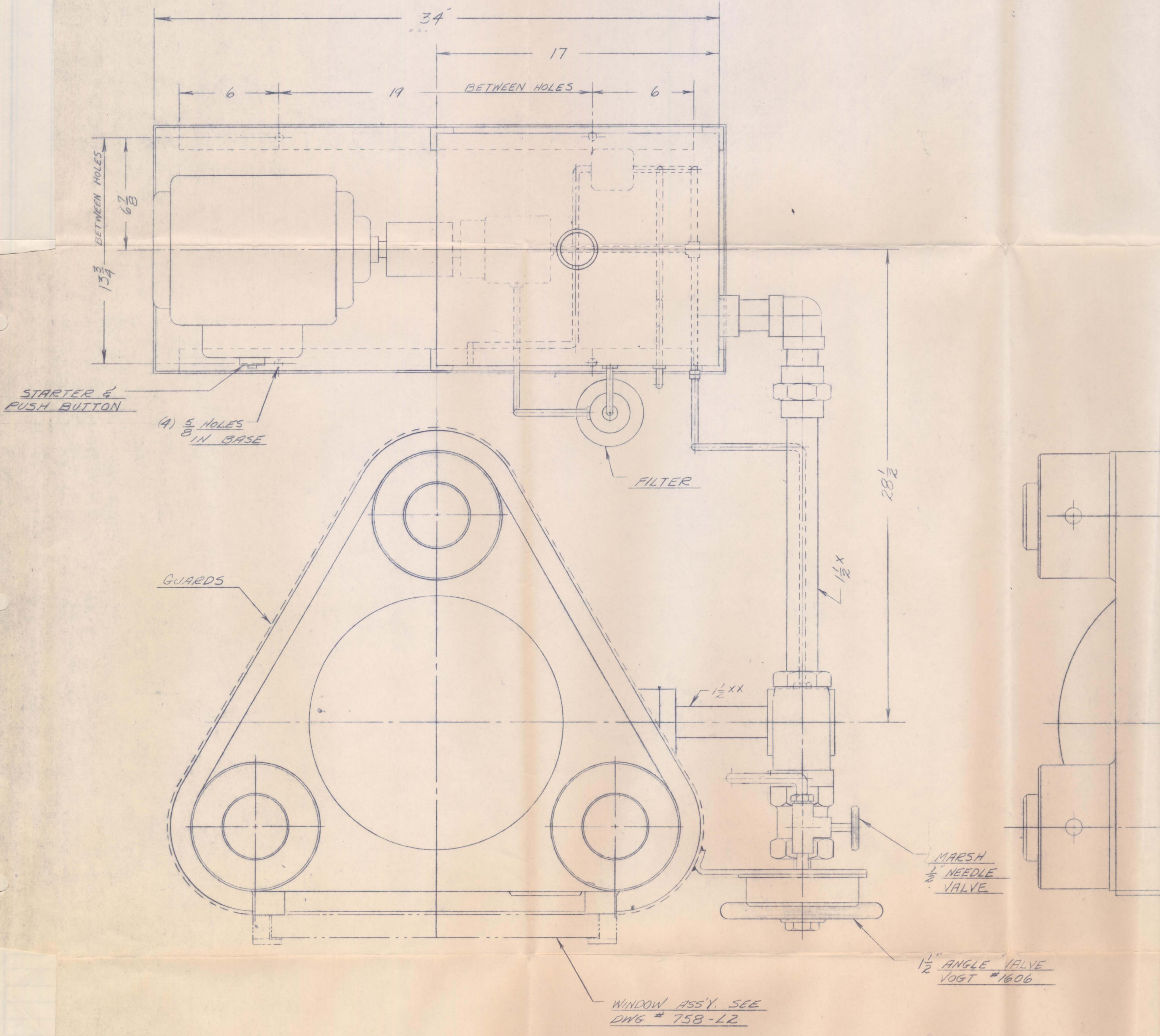




SECO  
 & PUM  
 .5 G.P.  
 1800  
 440  
 ACCRO



NOTE :

SCRAPE PLATEN & TOPHEAD UNTIL  
WEAR PLATES ARE PARALLEL  
WITHIN .002 T.I.R.

SPEEDS OF OPERA  
 ADVANCE ----- /  
 PRESS ----- /  
 RETURN ----- /